

Vitality Sheet

수집	Vitality	
스타일 번호	0873V	
응접봉 스타일 번호	353VS	
수업		
끝	ExoGuard®	
	미국	미터법
전체 제품 두께	0.079 in	2 mm
Installation Type	Dry Back	
권장 접착제	S150-95 Resilient Tile Spray, 4200 Resilient Tile 4 Gallon, 4200 Resilient Sheet 1 Gallon, 4200 Resilient Sheet 4 Gallon, 2200 Resilient Tile 4 Gallon or 4151 Multi-Use Premium 4 Gallon	

포장

실제 롤 크기	6.58 ft w x 65.94 ft l	2.01 m w x 20.10 m l
롤당 면적	47.84 sy/roll	40 sq m/roll
롤 당 무게	284 lbs	128.82 kg



권장 설치 방법



Reverse

공연 + 테스트

잔차 들어 쓰기 (Astm F1914)	Passes
유연성 (Astm F137)	Passes
내열성 (Astm F1514)	Passes
내광성 (Astm F1515)	Passes
화학 물질에 대한 내성 (Astm F925)	Passes
마찰 계수(astm D2407, 미끄러짐 저항)	>0.6, meets the recommended static coefficient of friction for ADA walking surfaces and accessible routes

Test Reports may be included or listed by the manufacturing/inventory style number as opposed to the noted selling style number.

보증

15년 상용 제한

[Commercial 15 Year Underbed Bond Warranty](#)

Diversity, Equity & Inclusion

We believe all humans are equal. Individually and collectively, we need to proactively create and promote opportunities that give everybody an equal footing in life. We nurture an environment where every voice and perspective can be heard, and proactively promote accessibility and inclusivity inside our network and beyond. One proof point is our ability to meet the criteria of the Social Fairness pillar of the Cradle to Cradle Product Standard. At Shaw Industries, we promote supplier participation that is reflective of Shaw's diverse customer base and local community. More than 42% of our spend***** is with small and diverse businesses. We believe having a strong Supplier Diversity Program is strategic for bringing more innovation to our businesses and openingnew markets for growth.

속성 + 인증

Climate Impact

Environmental Product Declaration (EPD)
Embodied Carbon (Cradle to Gate)
Total Recycled Content

ISO 14025, EN 15804 및 ISO 21930:2017에 따라 타사 인증 획득
6.91 Kg Co₂/M²
0% (Pre-Consumer 0% | Post-Consumer 0%)

Global Product Assessment

FloorScore® | 인증
CE Marking (EN 14041) | 타사 인증 획득
Country of Origin | Imported

녹색의 공헌 기여 크레딧

MR 크레딧 : 제품 공개 및 최적화 구축
환경 제품 선언-옵션 1 : 환경 제품 선언 (EPD)

EQ 크레딧 : 저 발광 재료
옵션 1 : 제품 범주 계산


Installation Guidelines
Maintenance Guidelines

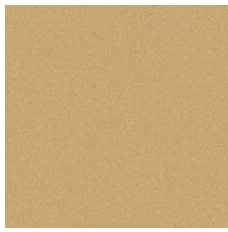
3rd Party Certified in Accordance with ISO 14025, EN 15804, & ISO 21930:2017
FloorScore Certified

Please visit www.shawcontract.com for the most current warranty information. Specifications are subject to nominal manufacturing variance. Material supply and/or manufacturing processes may necessitate changes without notice. This product is an exclusive design and may not be duplicated in any manner. Use of this design in the creation of another product design is also strictly prohibited. *****Allowable spend is domestic (US) spend in categories in which we have diverse suppliers from which to choose. Compared to non-allowable spend which includes categories in which we do not have domestic, small or diverse suppliers available to meet our needs.

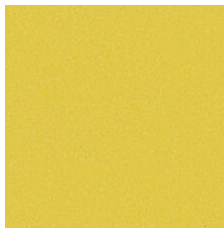
Visit shawcontract.com/testing for more information.

Available Colorways

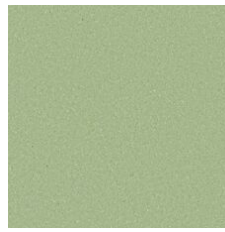
					
Rejuvenate 73100 LRV 73.1 Weldrod 05201	Inspire 73104 Weldrod 05202	Delight 73110 Weldrod 05206	Radiate 73112 Weldrod 05207	Uplift 73120 Weldrod 05226	Heal 73144 Weldrod 05237



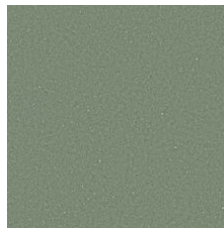
Warmth 73155
Weldrod 05209



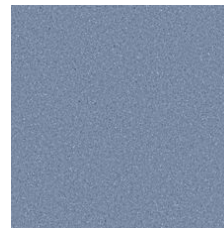
Zest 73201
Weldrod 05241



Flourish 73325
Weldrod 05242



Nourish 73370
Weldrod 05245



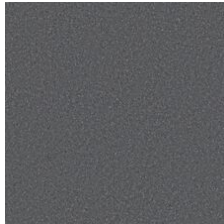
Benefit 73415
Weldrod 05232



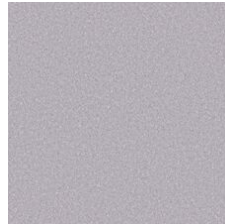
Soothe 73447
Weldrod 05239



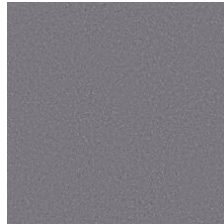
Exhilarate 73485
Weldrod 05240



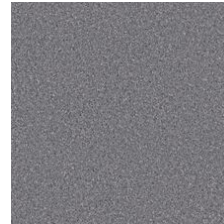
Elevate 73505
Weldrod 05205



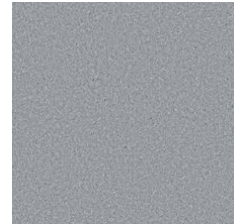
Excite 73515
Weldrod 05203



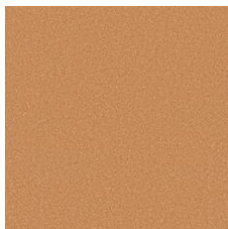
Restore 73518
Weldrod 05204



Strength 73530
Weldrod 05225



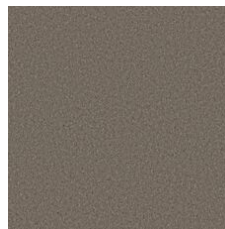
Invigorate 73535
Weldrod 05238



Energy 73675
Weldrod 05219



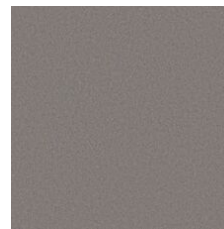
Thrive 73700
Weldrod 05243



Abundance 73740
Weldrod 05230



Comfort 73755
Weldrod 05228



Balance 73761
Weldrod 05244



Robust 73855
Weldrod 05220



Corporate Headquarters +1 800 257 7429 | +1 706 532 7984 | Atlanta +1 404 853 7429 | Bengaluru +91 80 6773 0202 | Beijing +86 10 6568 588 | Chicago +1 312 467 1331 | Dubai +971 4 584 6956 | Hong Kong +852 2623 0371 | Latin America (Miami) +1 305 827 5912 | London +44 207 961 4120 | Los Angeles +1 800 233 1614 | Melbourne +61 3 9939 8543 | Mexico City +55 5010 7600 | Mumbai +91 22 6284 5050 | Nantong +86 400 800 7429 | New York +1 212 953 7429 | Paris +33 (0) 1 81 22 44 39 | San Francisco +1 415 955 1920 | Santiago +562 2431 5000 x 550 | São Paulo +55 11 3071 1702 | Shanghai +86 21 3338 4000 | Singapore +65 6733 1811 | Sydney +1 800 556 302

© 2024 Shaw Industries Group, Inc., a Berkshire Hathaway Company
May 4, 2024